



Fossil Creek The Sherman

SYCAMORE
TRAIL

Standard Features

- Shingles: Composition 3 Tab Shingle Roof
- Endwall Eaves: Nominal 12" Eaves Multi Section Homes
- Rear Door: 34" x 76" Blank Rear Door
- Exterior Wall On Center: 2" x 4" Exterior Walls 16" O C
- Floor Decking: Tongue and Groove OSB Floor Decking
- Faucets: Dual Handle Teapot Faucets
- Cabinet Interior: Center Shelf in Base Cabinets
- Range Hood: 30" Overhead Cabinets
- Range Type: Frigidaire Black Electric Range
- Fans: Exhaust Fans
- Bathtub: Glamour Bath with 48" Shower
- Doors: Southern Classic Interior Doors
- Shut Off Valves Throughout: Central Water Shut Off Valve
- Ceiling Texture: Sea Spray Ceilings
- Water Heater: 30 Gallon Electric Water Heater
- Wall Insulation: R-11 Side Wall Insulation
- Washer Dryer Plumb Wire: Washer and Dryer Connections
- Siding: Vinyl Siding With Foam Core Backer
- Front Door: 34" x 76" House Type Front Door w/Storm
- Window Type: Single Pane Mill Finish Metal Windows
- Lighting: Ceiling Lights in All Bedrooms
- Side Wall Height: 90" Sidewall Height
- Cabinetry: Toe Kicks on Base Cabinets
- Sink: 6" Stainless Steel Sink
- Refrigerator: Frigidaire Black 18CF Frost Free Refrigerator
- Flooring: Diamond Floor Cushioned Lino in All Baths
- Additional Specs: Individual Shut-off Valves T/O
- Carpet Grade: Plush 13oz Carpet w/ Tack Strip Installed
- Vaulted Ceilings: Vaulted Ceilings Throughout
- Window Treatment: 1" Mini Blinds Through Out
- Electrical Service: Total Electric with 200 Amp Service
- Ceiling Insulation: R-21
- Floor Insulation: R-11 Floor Insulation
- Safety Alarms: Hard Wired Smoke Detectors with Battery Backup

Due to the fact that Southern Energy Homes continuously updates and modifies its products, our brochures and literature are for illustrative purposes only. Floorplan dimensions are nominal. We reserve the right to make changes due to material changes, prices, colors specifications, features at anytime without notice or obligation. Your retailer can provide you with specific information on the home of your choice.



Sycamore Trail Manufactured Homes

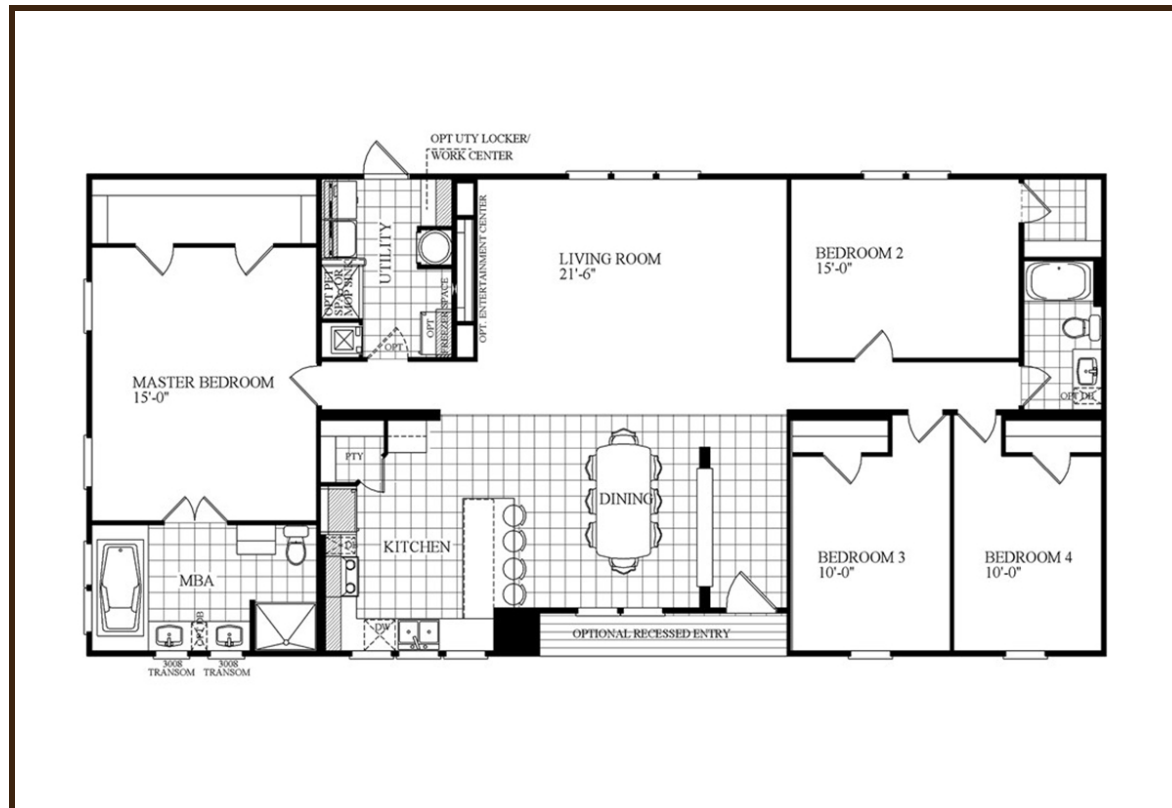
2101 SW 38th St
Lawton, OK 73505

(580) 357-1850

<http://www.sycamoretrail.com>

Fossil Creek The Sherman

SYCAMORE
TRAIL



4 BEDS 2 BATHS 1980 SQ. FT

Beautifully crafted family home with optional recessed covered porch entry, doorside modern bright kitchen and formal dining room, spacious living room, large master bedroom with luxurious in-suite bath boasting comforting elongated soaking tub, walk-in shower and and dual sinks.





Sycamore Trail Manufactured Homes
2101 SW 38th St
Lawton, OK 73505

(581) 551-1000
<http://www.sycamoretrail.com>

