



Admiral 35XTM18803AH

SYCAMORE
TRAIL

Standard Features

- Backsplash: 2" Laminate Backsplash
- Ceiling Insulation: R-11
- Floor Decking: Tongue & Groove O.S.B
- Side Wall Height: 8ft Flat Textured Ceiling Throughout
- Wall Insulation: R-11
- Doors: Raised Panel Interior Doors
- Dishwasher: Installed
- Range Hood: Vented Range Hood
- Refrigerator: 18 cu. Ft. Refrigerator
- Washer Dryer Plumb Wire: Plumbed & Wired for Washer & Dryer
- Water Shut Off Valves: Main Water Cut-Off Valve
- Flooring: Lino
- Exterior Wall On Center: 2 x 4 Exterior Walls 16" O.C.
- Floor Joists: 2 x 6 Floor Joists (14' & 16" wide) / 2 x 8 Floor Joists (18' wide)
- Floor Insulation: R-21
- Lighting: Porch Lights Front & Rear
- Cabinetry: Center Shelves in Base Cabinets
- Faucets: Brushed Nickel Faucets
- Range Type: Standard Electric Range
- Sink: Stainless Steel Sink w/ Gooseneck Faucet
- Water Heater: 30 Gallon Water Heater

Due to the fact that Clayton Homes continuously updates and modifies its products, our brochures and literature are for illustrative purposes only. Floorplan dimensions are nominal. We reserve the right to make changes due to material changes, prices, colors specifications, features at anytime without notice or obligation. Your retailer can provide you with specific information on the home of your choice.



Sycamore Trail Manufactured Homes

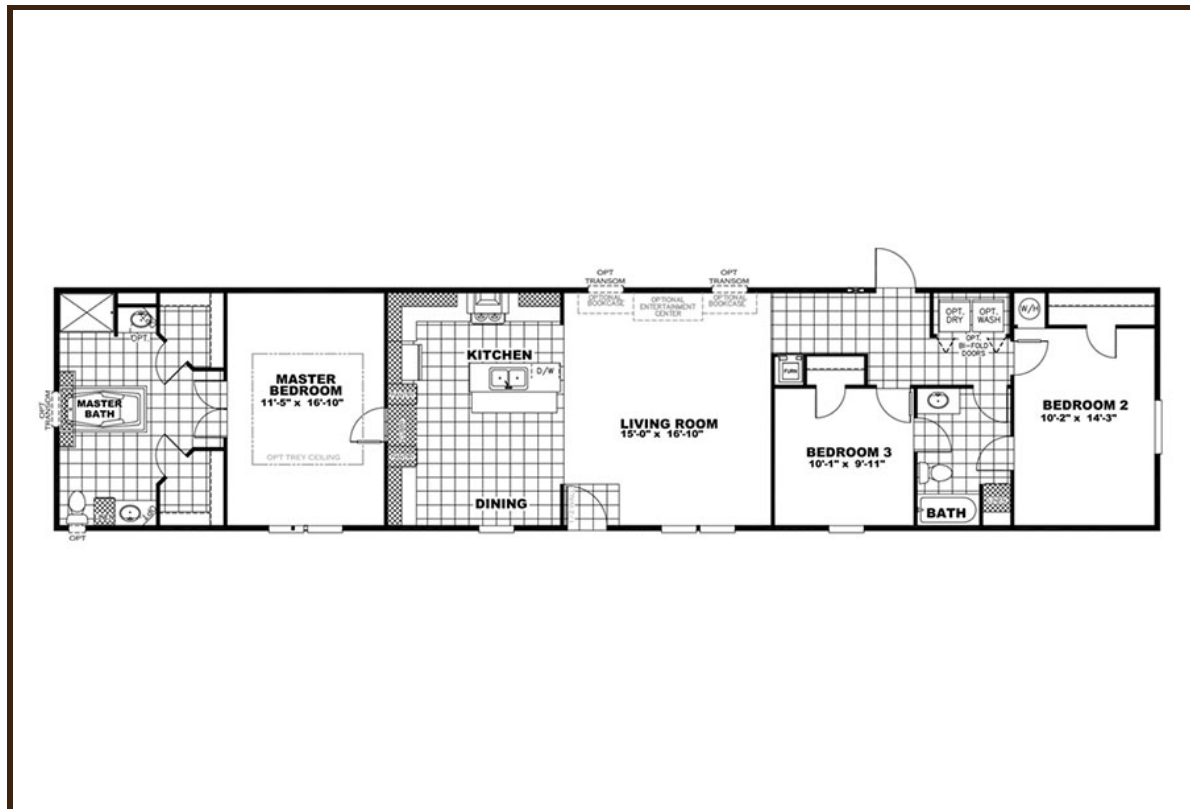
2101 SW 38th St
Lawton, OK 73505

(580) 357-1850

<http://www.sycamoretrail.com>

Admiral 35XTM18803AH

SYCAMORE
TRAIL



3 BEDS 2 BATHS 1400 SQ. FT

Sprawling 18' x 80' home with elegant features and options throughout including king sized bedrooms, beautiful full baths, spacious living room with optional transom windows and full wall entertainment center.





Sycamore Trail Manufactured Homes
2101 SW 38th St
Lawton, OK 73505

(581) 551-2888
<http://www.sycamoretrail.com>

